

Mega-Pixel Network Camera

Quick Installation Guide

English | 繁中 | 簡中 | 日本語 | Français | Español | Deutsch | Português | Italiano



IP7138

This guide describes the basic functions of IP7138.

All detailed information is described in the user's manual.





Warning Before Install

- **Power off the Network Camera as soon as it is found smoking or smelt unusual.**



Contact your distributor when such cases happen.

- **Keep the Network Camera away from the water. If the Network Camera is wet, power off immediately.**



Contact your distributor when such cases happen.

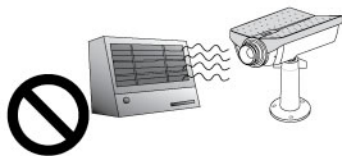
- **Do not place the Network Camera around the heat sources, such as television or oven.**



- **Keep the Network Camera away from the direct sunlight.**



- **Refer to your user's manual for the operating temperature.**



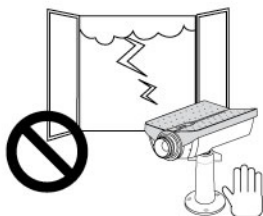
- **Do not place the Network Camera in high humid environments.**



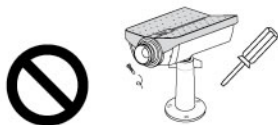
- **Do not place the Network Camera on unsteady surfaces.**



- **Do not touch the Network Camera when it's lightning.**



- **Do not disassemble the Network Camera.**



- **Do not drop the Network Camera.**

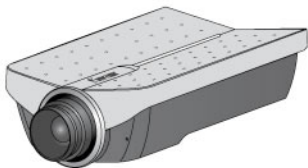


- **Do not insert any object into the Network Camera, such as needles.**



1 Check Package Contents

● IP7138



● Power adapter



● Camera stand



● Software CD



● Quick installation guide

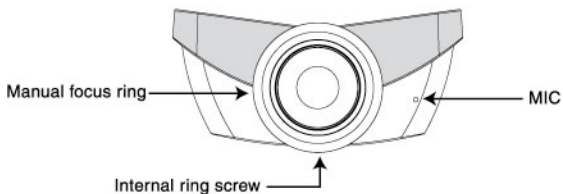


● Warranty card

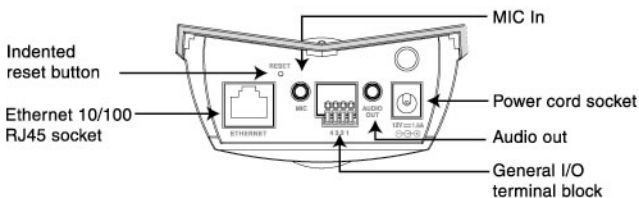


2 Physical Description

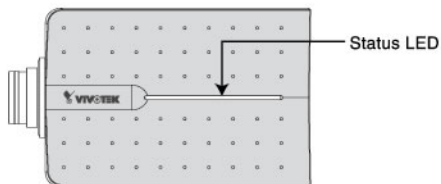
● Front panel



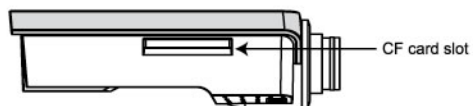
● Back panel



● Up cover



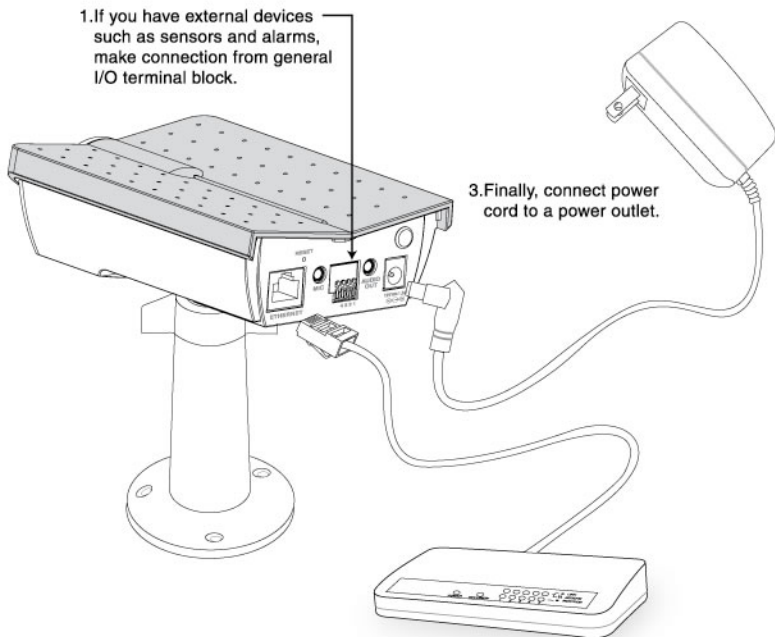
● CF card slot



3 Make Connections

● Install your Network Camera in Ethernet network

1. If you have external devices such as sensors and alarms, make connection from general I/O terminal block.



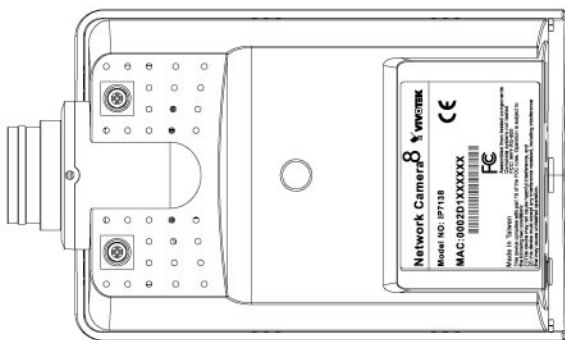
3. Finally, connect power cord to a power outlet.

2. Use Ethernet cable to make connection from Ethernet 10/100 RJ45 socket to the hub.

* Use Category 5 Cross Cable when Network Camera is directly connected to PC.

4 Assign IP Address

- A** Note the serial number from the label on the unit.



This serial number is same as Ethernet address,
for example: 0002D1100052=00-02-D1-00-00-12

B Assign IP address

Using Installer program

1. Run the "Installation Wizard" under the Software Utility directory from software CD.

2. The program will search the Vivotek Video receivers, Video servers or Network cameras on the same LAN.



3. After searching, the main installer window will pop up. Click on serial number that matches the one you just noted from previous page.



4. Click "Link to selected device(s)" to connect the Internet Explorer to the Network Camera.

5

The Internet Explorer Connects to the Network Camera



For further setup, please check the user's manual on the software CD.