



IB8382-T/-ET



IB8382-F3/-EF3

Bullet Network Camera



5MP · 30M IR · WDR Enhanced · 3DNR · P-iris · Remote Focus · Smart Stream · Smart IR · Video Rotation · IP66 · IK10 · Cable Management · Extreme Weather · Defog

VIVOTEK's IB8382 is a series of economic professional outdoor bullet network cameras in VIVOTEK's 5MP Lite series which offer up to 15 fps at 5-Megapixel or 30 fps at 1080p resolution at a competitive price. Equipped with a new high resolution image sensor, different from other 5MP cameras, the IB8382 series provides sharper image quality and finer detail at a cost-effective price. And with powerful 3D Noise Reduction technology and Smart Stream technology the IB8382 series can also optimize resolution for a desired object or area to maximize efficiency of bandwidth usage.

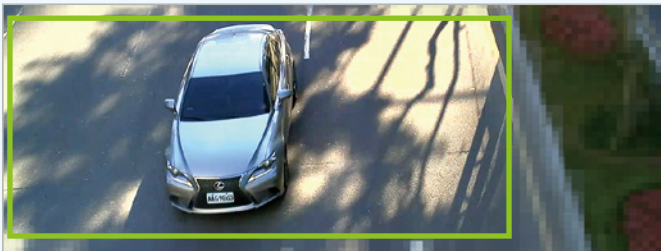
To create the perfect focus required to reap the benefits of higher resolutions, VIVOTEK's IB8382 series provides the options of both fixed focus, used for simple operation without electrical power, and remote focus with built-in stepping motors and P-iris for precise adjustment remotely.

To provide higher resolution in outdoor and harsh environments, VIVOTEK's IB8382 series is also armed with IP66-rated housing to help the camera body withstand rain, dust and high pressure water jets from any direction, while its IK10-rated housing provides protection against acts of vandalism or other impacts. Additionally, a wide operating temperature range further improves the IB8382-EF3 and IB8382-ET's performance and reliability in extremely cold or warm weather, even when using PoE.

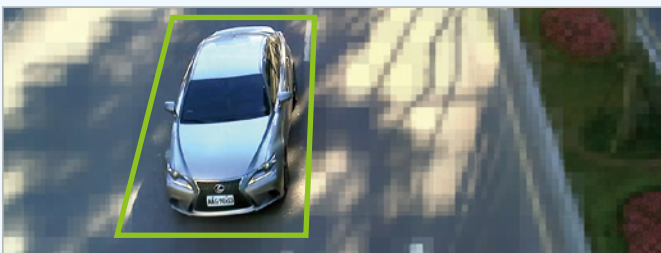
With the highly flexible VADP (VIVOTEK Application Development Platform), users can extend the features of this series by adding third-party applications for the IB8382-F3, IB8382-EF3, IB8382-T, and IB8382-ET. Thus the IB8382 series is not only equipped with multiple focusing methods and wide temperature range options, is but ideal for a wide variety of applications.

Key Features

- 5-Megapixel CMOS Sensor
- 15 fps @ 2560x1920, 30 fps @ 1920x1080
- 3 ~ 9 mm, Vari-focal, Remote Focus, P-iris Lens (IB8382-T/-ET)
- Removable IR-cut Filter for Day & Night Function
- Built-in IR Illuminators, Effective up to 30 Meters
- Smart IR Technology to Avoid Overexposure
- Smart Stream to Optimize Bandwidth Efficiency
- WDR Enhancement for Unparalleled Visibility in Extremely Bright and Dark Environments
- 3D Noise Reduction for Low-light Conditions
- Two-way Audio
- Video Rotation for Corridor View
- Weather-proof IP66-rated and Vandal-proof IK10-rated Housing
- Extreme Weather Support with PoE (IB8382-EF3/-ET)
- VIVOTEK VCA (Video Content Analysis) Support



Smart Stream - Manual Mode



Smart Stream - Auto Mode



Entrance



Campus



Parking Lot



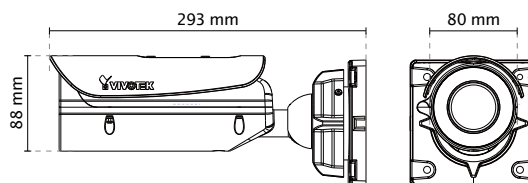
Train Station

Technical Specifications

Model	IB8382-T: Vari-focal, P-iris, Remote Focus IB8382-ET: Vari-focal, P-iris, Remote Focus, Extreme Weather IB8382-F3: Fixed-focal IB8382-EF3: Fixed-focal, Extreme Weather	
System Information		
CPU	Multimedia SoC (System-on-Chip)	
Flash	1Gb	
RAM	4Gb	
Camera Features		
Image Sensor	1/3.2" Progressive CMOS	
Maximum Resolution	2560x1920 (5MP)	
Lens Type	Vari-focal, Remote Focus (IB8382-T/-ET) Fixed-focal (IB8382-F3/-EF3)	
Focal Length	IB8382-T/IB8382-ET: f = 3 ~ 9 mm IB8382-F3/IB8382-EF3: f = 3.6 mm	
Aperture	IB8382-T/IB8382-ET: F1.2 ~ F2.3 IB8382-F3/IB8382-EF3: F2.1	
Auto-iris	P-iris (IB8382-T/IB8382-ET)	
Field of View	IB8382-T/IB8382-ET: 35° ~ 78° (Horizontal) 27° ~ 54° (Vertical) 44° ~ 100° (Diagonal)	
	IB8382-F3/IB8382-EF3: 68° (Horizontal) 51° (Vertical) 89° (Diagonal)	
	Shutter Time	1/5 sec. to 1/32,000 sec.
	WDR Technology	WDR Enhanced
	Day/Night	Removable IR-cut filter for day & night function
Minimum Illumination	IB8382-T/IB8382-ET: 0.04 Lux @ F1.2 (Color) 0.001 Lux @ F1.2 (B/W)	
	IB8382-F3/IB8382-EF3: 0.009 Lux @ F2.1 (Color) 0.001 Lux @ F2.1 (B/W)	
	Pan/tilt/zoom Functionalities	ePTZ: 48x digital zoom (4x on IE plug-in, 12x built in)
	IR Illuminators	Built-in IR illuminators, effective up to 30 meters with Smart IR IR LED*8
	On-board Storage	Slot type: SD/SDHC/SDXC card slot Seamless Recording
Video		
Compression	H.264 & MJPEG	
Maximum Frame Rate	15 fps @ 2560x1920	
	15 fps @ 2048x1536	
	30 fps @ 1920x1080	
	In both compression modes	
Maximum Streams	4 simultaneous streams	
S/N Ratio	Above 65 dB	
Dynamic Range	70 dB	
Video Streaming	Adjustable resolution, quality and bitrate; Smart Stream	
Image Settings	Adjustable image size, quality and bit rate, time stamp, text overlay, flip & mirror, configurable brightness, contrast, saturation, sharpness, white balance, exposure control, gain, backlight compensation, privacy masks, scheduled profile settings, 3D noise reduction, video rotation, defog	
Audio		
Audio Capability	Two-way Audio (full duplex)	
Compression	G.711, G.726	
Interface	External microphone input Audio output	
Network		
Users	Live viewing for up to 10 clients	
Protocols	IPv4, IPv6, TCP/IP, HTTP, HTTPS, UPnP, RTSP/RTP/RTCP, IGMP, SMTP, FTP, DHCP, NTP, DNS, DDNS, PPPoE, CoS, QoS, SNMP, 802.1X, UDP, ICMP, ARP, SSL, TLS	
Interface	10Base-T/100 BaseTX Ethernet (RJ-45) *It is highly recommended to use standard Cat. 5e & Cat. 6 cables which are compliant with the 3P/ETL standard.	
ONVIF	Supported, specification available at www.onvif.org	
Intelligent Video		
Video Motion Detection	Five-window video motion detection	

VCA	Line crossing detection, field detection, loitering detection *Available per project request.
Alarm and Event	
Alarm Triggers	Motion detection, manual trigger, digital input, periodical trigger, system boot, recording notification, camera tampering detection, audio detection
Alarm Events	Event notification using digital output, HTTP, SMTP, FTP and NAS server, SD Card File upload via HTTP, SMTP, FTP, NAS server and SD card
General	
Smart Focus System	IB8382-T/IB8382-ET: Remote Focus
Connectors	RJ-45 cable connector for Network/PoE connection
	Audio input
	Audio output
LED Indicator	DC 12V power input
	Digital input*1 Digital output*1
Power Input	System power and status indicator
Power Consumption	DC 12V
	IB8382-T/-F3: IEEE 802.3af/at PoE Class 0
	IB8382-ET/-EF3: IEEE 802.3at PoE Class 4
Dimensions	IB8382-T: Max. 9.5 W
	IB8382-ET/-EF3: Max. 25 W (Heater on)
Weight	IB8382-F3: Max. 9 W
Casing	Ø 88 x 293 mm
	Net: 1264 g
Safety Certifications	Weather-proof IP66-rated housing
	Vandal-proof IK10-rated metal housing (Casing only)
	IB8382-T/-ET: CE, LVD, FCC Class A, VCCI, C-Tick, UL
Operating Temperature	IB8382-F3/-EF3: CE, LVD, FCC Class A, VCCI, C-Tick
	IB8382-T/-F3: Starting Temperature: -10°C ~ 50°C (14°F ~ 122°F)
	Working Temperature: -20°C ~ 50°C (-4°F ~ 122°F)
Warranty	IB8382-ET/-EF3: Starting Temperature: -40°C ~ 50°C (-40°F ~ 122°F)
	Working Temperature: -50°C ~ 50°C (-58°F ~ 122°F)
System Requirements	
Operating System	Microsoft Windows 7/8/Vista/XP/2000
Web Browser	Mozilla Firefox 7~43 (Streaming only) Internet Explorer 7/8/9/10/11
Other Players	VLC: 1.1.11 or above Quicktime: 7 or above
Included Accessories	
CD	User's manual, quick installation guide, Installation Wizard 2
Others	Quick installation guide, warranty card, sun shield, wall mount bracket, waterproof RJ45 Ethernet enclosure, alignment sticker / desiccant bag, waterproof connector, screw

Dimensions



Compatible Accessories

Mounting Kits



AM-714
Junction Box